

TM 5-6675-250-20P

---

**TECHNICAL MANUAL**

ORGANIZATIONAL MAINTENANCE REPAIR PARTS  
AND SPECIAL TOOLS LIST

**SURVEY INSTRUMENT, AZIMUTH GYRO, LIGHTWEIGHT**

(LEAR SIEGLER, INC. MODELS AG-8 AND AG-8A)

**NSN6675-00-062-8579**

---

HEADQUARTERS, DEPARTMENT OF THE ARMY

January 1976



TECHNICAL MANUAL  
NO. 5-6675-250-20P

HEADQUARTERS  
DEPARTMENT OF THE ARMY  
WASHINGTON, D.C., 7 January 1976

ORGANIZATIONAL MAINTENANCE REPAIR PARTS  
AND SPECIAL TOOLS LIST

SURVEY INSTRUMENT, AZIMUTH GYRO, LIGHTWEIGHT  
(LEAR SIEGLER, INC. MODELS AG-8 AND AG-8A)  
NSN 6675-00-062-8579

Current as of 25 August 1975

REPORTING OF ERRORS

You can help improve this manual by calling attention to errors and by recommending improvements. Your letter, DA Form 2028 (Recommended Changes to Publications and Blank Forms), and/or DA Form 2028-2 (Recommended Changes to Equipment Technical Manuals), may be used. Copies of DA Form 2028-2 are attached in the back of the manual for your use. Please mail your recommended changes directly to Commander, U.S. Army Troop Support Command, ATTN: AMSTS-MPP, 4300 Goodfellow Blvd., St. Louis, MO 63120. A reply will be furnished directly to you.

TABLE OF CONTENTS

	Listing Page	Illus. Figure
I. INTRODUCTION .....	1	
1. Scope .....	1	
2. General .....	1	
3. Explanation of columns .....	1	
4. Special information .....	3	
5. How to locate repair parts .....	3	
6. Abbreviations .....	3	
II. REPAIR PARTS LIST .....	5	
Group 01. Gyroscopic Reference Unit .....	5	
Readout illumination assembly .....	5	4
Telescope assembly .....	6	8
Upper housing assembly (Sheet 2 of 3) .....	8	16(2)
Tripod assembly .....	10	20
02. Electronic Control Unit .....	12	21
Electronic control unit panel (Sheet 1 of 3) .....	14	23(1)
Electronic control unit panel (Sheet 2 of 3) .....	16	23(2)
03. Transport Case Assembly .....	18	24
Tripod adapter assembly .....	20	25
04. AC-DC Converter .....	21	26
05. Transit Case Assembly .....	22	27
III. SPECIAL TOOLS LIST (Not Applicable)		
IV. NATIONAL STOCK NUMBER AND PART NUMBER INDEX .....	25	



Section I.

INTRODUCTION

**1. Scope.**

This manual lists repair parts, special tools, test, measurement, and diagnostic equipment (TMDE), and other support equipment required for operation and performance of organizational maintenance of the azimuth gyro survey instrument.

**2. General.**

*a. Section II – Repair Parts List.* A list of repair parts authorized for use in the performance of maintenance. The list also includes parts which must be removed for replacement of the authorized parts. Parts lists are composed of functional groups in ascending numerical sequence, with the parts in each group listed in figure and item number sequence. Bulk materials are listed in NSN sequence, as the last group in Section II.

*b. Section III - Special Tools List.* A list of special tools, TMDE, and support equipment authorized for the performance of maintenance at the organizational level.

*c. Section IV - National Stock Number and Part Number Index.* A list, in ascending numerical sequence, of all National stock numbers appearing in the listings, followed by a list, in alphanumeric sequence, of all part numbers appearing in the listings. National stock numbers and part numbers are cross-referenced to each illustration figure and item number appearance.

**3. Explanation of Columns.**

The following provides an explanation of columns found in the tabular listings:

*a. Illustration.* This column is divided as follows:

(1) *Figure number.* Indicates the figure number of the illustration in which the item is shown.

(2) *Item number.* The number used to identify each item called out in the illustration.

*b. Source, Maintenance, and Recoverability Codes (SMR).*

(1) *Source code.* Source codes are assigned to support items to indicate the manner of acquiring support items for maintenance, repair, or overhaul of end items. Source codes are entered in the first and second positions of the Uniform SMR Code format as follows;

<i>Code</i>	<i>Definition</i>
PA	Item procured and stocked for anticipated or known usage.
PB	Item procured and stocked for insurance purposes because essentiality dictates that a minimum quantity be available in the supply systems.
PC	Item procured and stocked and which otherwise would be coded PA except that it is deteriorative in nature.
PD	Support item, excluding support equipment, procured for initial issue or outfitting and stocked for subsequent or additional initial issues or outfittings. Not subject to automatic replenishment.
PE	Support equipment procured and stocked for initial issue or outfitting to specified maintenance repair activities.
PF	Support equipment which will not be stocked but which will be centrally procured on demand.
PG	Item procured and stocked to provide for sustained support for the life of the equipment. It is applied to an item peculiar to the equipment which, because of probable discontinuance or shutdown of production facilities, would prove uneconomical to reproduce at a later time.
KD	An item of a depot overhaul/repair kit and not purchased separately. Depot kit defined as a kit that provides item required at the time of overhaul or repair.
KF	An item of a maintenance kit and not purchased separately. Maintenance kit defined as a kit that provides an item that can be replaced at organizational or intermediate levels of maintenance.
KB	Item included in both a depot overhaul/repair kit and a maintenance kit.
MO	Item to be manufactured or fabricated at organizational level.

Code	Definition
MF	Item to be manufactured or fabricated at the direct support maintenance level.
MH	Item to be manufactured or fabricated at the general support maintenance level.
MD	Item to be manufactured or fabricated at the depot maintenance level.
AO	Item to be assembled at organizational level.
AF	Item to be assembled at direct support maintenance level.
AH	Item to be assembled at general support maintenance level.
AD	Item to be assembled at depot maintenance level.
XA	Item is not procured or stocked because the requirements for the item will result in the next higher assembly.
XB	Item is not procured or stocked. If not available through salvage, requisition.
XD	A support item that is not stocked. When required, item will be procured through normal supply channels.

**NOTE**

Cannibalization or salvage may be used as a source of supply for any items source coded above except those coded XA or XD.

(2) *Maintenance code.* Maintenance codes are assigned to indicate the levels of maintenance authorized to USE and REPAIR support items. The maintenance codes are entered in the third and fourth positions of the Uniform SMR Code format as follows:

(a) The maintenance code entered in the third position will indicate the lowest maintenance level authorized to remove, replace, and use the support item. The maintenance code entered in the third position will indicate one of the following levels of maintenance:

Code	Application/Explanation
C	Crew or operator maintenance performed within organizational maintenance.
O	Support item is removed, replaced, used at the organizational level.
I	Support item is removed, replaced, used by the direct support element of integrated direct support maintenance.
F	Support item is removed, replaced, used at the direct support level.
H	Support item is removed, replaced, used at the general support level.
D	Support items that are removed, replaced, used at depot, mobile depot, specialized repair activity only.

**NOTE**

Code "T" and "F" will be considered the same by direct support units.

(b) The maintenance code entered in the fourth position indicates whether the item is to be repaired and identifies the lowest maintenance level with the capability to perform complete repair (i.e., all authorized maintenance functions). This position will contain one of the following maintenance codes:

Code	Application/Explanation
O	The lowest maintenance level capable of complete repair of the support item is the organizational level.
F	The lowest maintenance level capable of complete repair of the support item is the direct support level.
H	The lowest maintenance level capable of complete repair of the support item is the general support level.
D	The lowest maintenance level capable of complete repair of the support item is the depot level.
L	Repair restricted to designated specialized repair activity.
Z	Nonreparable. No repair is authorized.
B	No repair is authorized. The item may be reconditioned by adjusting, lubricating, etc., at the user level. No parts or special tools are procured for the maintenance of this item.

(3) *Recoverability code.* Recoverability codes are assigned to support items to indicate the disposition action on unserviceable items. The recoverability code is entered in the fifth position of the Uniform SMR Code format as follows:

Recoverability Codes	Definition
Z	Nonreparable item. When unserviceable, condemn and dispose at the level indicated in position 3.
O	Reparable item. When uneconomically repairable, condemn and dispose at organizational level.
F	Reparable item. When uneconomically repairable, condemn and dispose at the general support level.
H	Reparable item. When uneconomically repairable, condemn and dispose at the general support level.
D	Reparable item. When beyond lower level repair capability, return to depot. Condemnation and disposal not authorized below depot level.
L	Reparable item. Repair, condemnation, and disposal not authorized below depot /specialized repair activity level.

Recoverability Codes	Definition
----------------------	------------

A	Item requires special handling or condemnation procedures because of specific reasons, (i.e., precious metal content, high dollar value,
---	--

Recoverability  
Codes

Definition

critical material or hazardous material). Refer to appropriate manuals/directives for specific instructions.

c. *National Stock Number.* Indicates the National stock number assigned to the item and will be used for requisitioning purposes.

d. *Part Number.* Indicates the primary number used by the manufacturer which controls the design and characteristics of the item by means of its engineering drawings, specification standards, and inspection requirements to identify an item or range of items.

**NOTE**

When a stock numbered item is requisitioned, the repair part received may have a different part number than the part being replaced.

e. *Federal Supply Code for Manufacturer (FSCM).* The FSCM is a five-digit numeric code listed in SB 708-42 which is used to identify the manufacturer, distributor, or government agency, etc.

f. *Description.* Indicates the Federal item name and, if required, a minimum description to identify the item. Items that are included in kits and sets are listed below the name of the kit or set with the quantity of each item in the kit or set indicated in the quantity incorporated in unit column. When the part to be used differs between serial numbers of the same model, the effective serial numbers are shown as the last line of the description. In the Special Tools List, the initial basis of issue (BOI) appears as the last line in the entry for each special tool, TMDE and support equipment. When density of equipments supported exceeds density spread indicated in the basis of issue, the total authorization is increased accordingly.

g. *Unit of Measure (U/M).* Indicates the standard of the basic quantity of the listed item as used in performing the actual maintenance function. This measure is expressed by a two-character alphabetical abbreviation (e.g., ea, in, pr, etc.). When the unit of measure differs from the unit of issue, the lowest unit of issue that will satisfy the required units of measure will be requisitioned.

h. *Quantity Incorporated in Unit.* Indicates the quantity of the item used in the breakout shown on the illustration figure, which is prepared for a functional group, subfunctional group, or an assembly. A "V" appearing in this column in lieu of a quantity indicates that no specific quantity is applicable (e.g., shims, spacers, etc.).

**4. Special Information**

a. Repair parts kits and gasket sets appear as the last entries in the repair parts listing for the figure in which its parts are listed as repair parts or are listed at the end of the repair parts listing for the last figure containing parts of the kit,

b. The illustrations in this manual are identical to those published in TM 5-6675-250-34P. Only those parts assigned the third position SMR code "C" or "O" are listed in the tabular listing, therefore, there may be a break in the item number sequence. Only illustrations containing organizational authorized items appear in this manual.

c. The following publications pertain to the Survey Instrument and its components:

TM 5-6675-250-12 Operator's and Organizational Maintenance

**5. How to Locate Repair Parts.**

a. *When National Stock Number or Part Number is Unknown:*

(1) *First.* Using the table of contents, determine the functional group within which the repair part belongs. This is necessary since illustrations are prepared for functional groups, and listings are divided into the same groups.

(2) *Second.* Find the illustration covering the functional group to which the repair part belongs.

(3) *Third.* Identify the repair part on the illustration and note the illustration figure and item number of the repair part.

(4) *Fourth.* Using the Repair Parts Listing, find the figure item number noted on the illustration.

b. *When National Stock Number or Part Number is Known:*

(1) *First.* Using the Index of National Stock Numbers and Part Numbers, find the pertinent National stock number or part number. This index is in ascending NSN sequence followed by a list of part numbers in ascending alphanumeric sequence, cross-referenced to the illustration figure number and item number.

(2) *Second.* After finding the figure and item number, locate the figure and item number in the repair parts list.

**6. Abbreviations.**

Abbreviations	Explanation
ASSY .....	assembly

**TM 5-6675-250-20P**

*Abbreviations*

*Explanation*

*Abbreviations*

*Explanation*

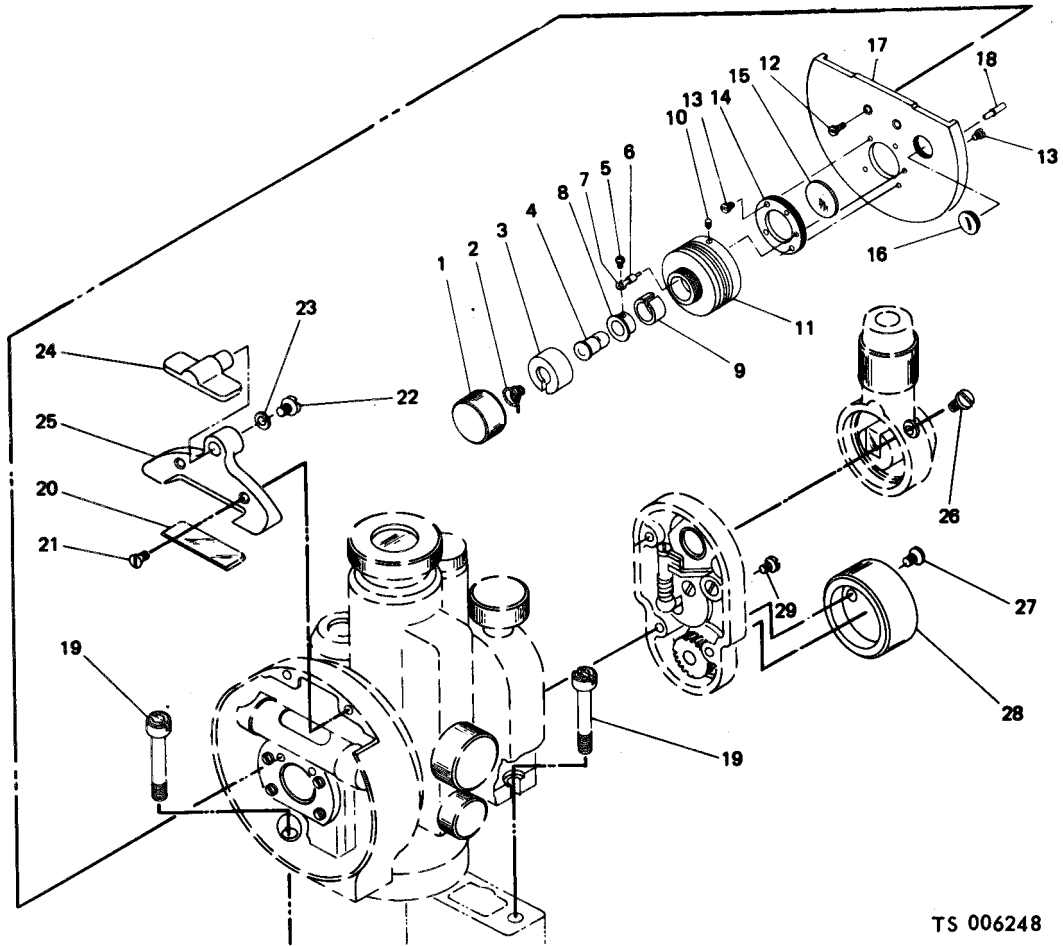
EA .....  
HD .....  
IN.....

each  
head  
inch(es)

LG .....  
MTG .....  
RTNG .....

long  
mounting  
retaining

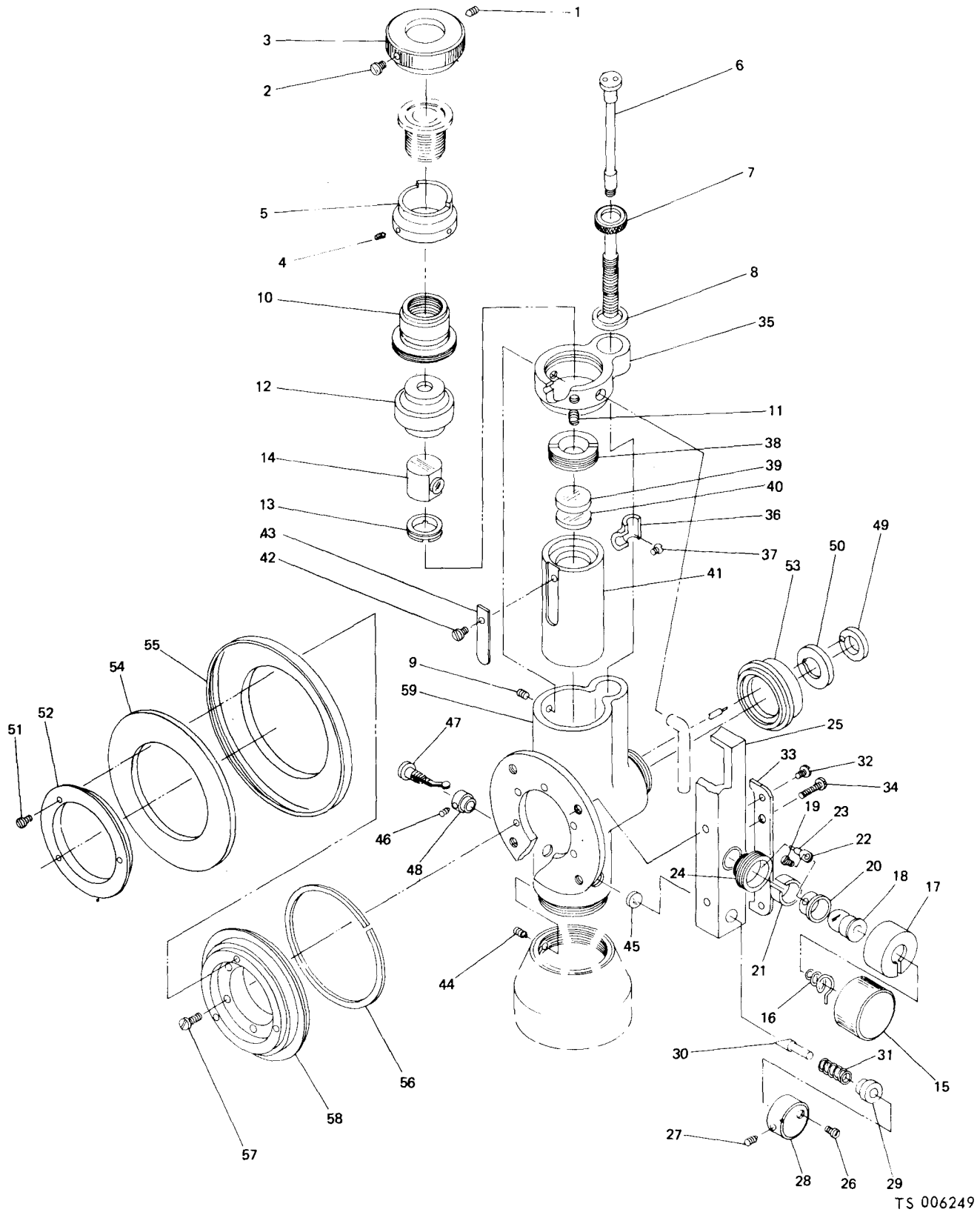




TS 006248

(1) ILLUSTRATION		(2)	(3)	(4)	(5)	(6)	(7)	(8)
(a) FIG NO.	(b) ITEM NO.	SMR CODE	NATIONAL STOCK NUMBER	PART NUMBER	FSCN	DESCRIPTION	U/M	QTY INC IN UNIT
						Useful On Code		
						SECTION II - REPAIR PARTS LIST		
						GROUP 01 - GYROSCOPIC REFERENCE UNIT		
						0101 - THEODOLITE		
4		PBOZZ		112-430-2207	01122	READOUT ILLUMINATION ASSEMBLY	EA	1
4		XBOZZ		112-760-2019	01122	COVER ASSEMBLY	EA	1
4	1	XBOZZ		917-351-0220	01122	KNOB: HARD RUBBER	EA	1
4	2	XAOZZ		944-134-5000	01122	SPRING, CONDUCTOR: BRONZE, GOLD PLATED	EA	1
4	3	XBOZZ		112-760-2020	01122	COVER: GERMAN SILVER	EA	1
4	4	PAOZZ	6240-00-763-7744	MS25237-387	96906	LAMP	EA	1
4	5	XBOZZ		930-115-4000	01122	SCREW, CYLINDER HEAD: BRASS	EA	1
4	12	XBOZZ		LAM2304	01122	SCREW, SINK HEAD: BRASS	EA	1
4	13	XBOZZ		ZAM1704	01122	SCREW, CYLINDER HEAD: BRASS	EA	1
4	20	XBOZZ		112-454-2055	01122	WINDOW, PLASTIC	EA	1
4		PAOZZ		112-454-2070	01122	MIRROR ASSEMBLY	EA	1
4	22	XBOZZ		ZAM2603	01122	SCREW, CYLINDER HEAD: BRASS	EA	1
4	23			938-680-2010	01122	RING, SPRING: BR	EA	1
4	24	XBOZZ		100-526-0007	01122	MIRROR ASSEMBLY: BRASS, PAINTED	EA	1
4	25	XBOZZ		112-454-2007	01122	COVER: ALUMINUM, PAINTED	EA	1

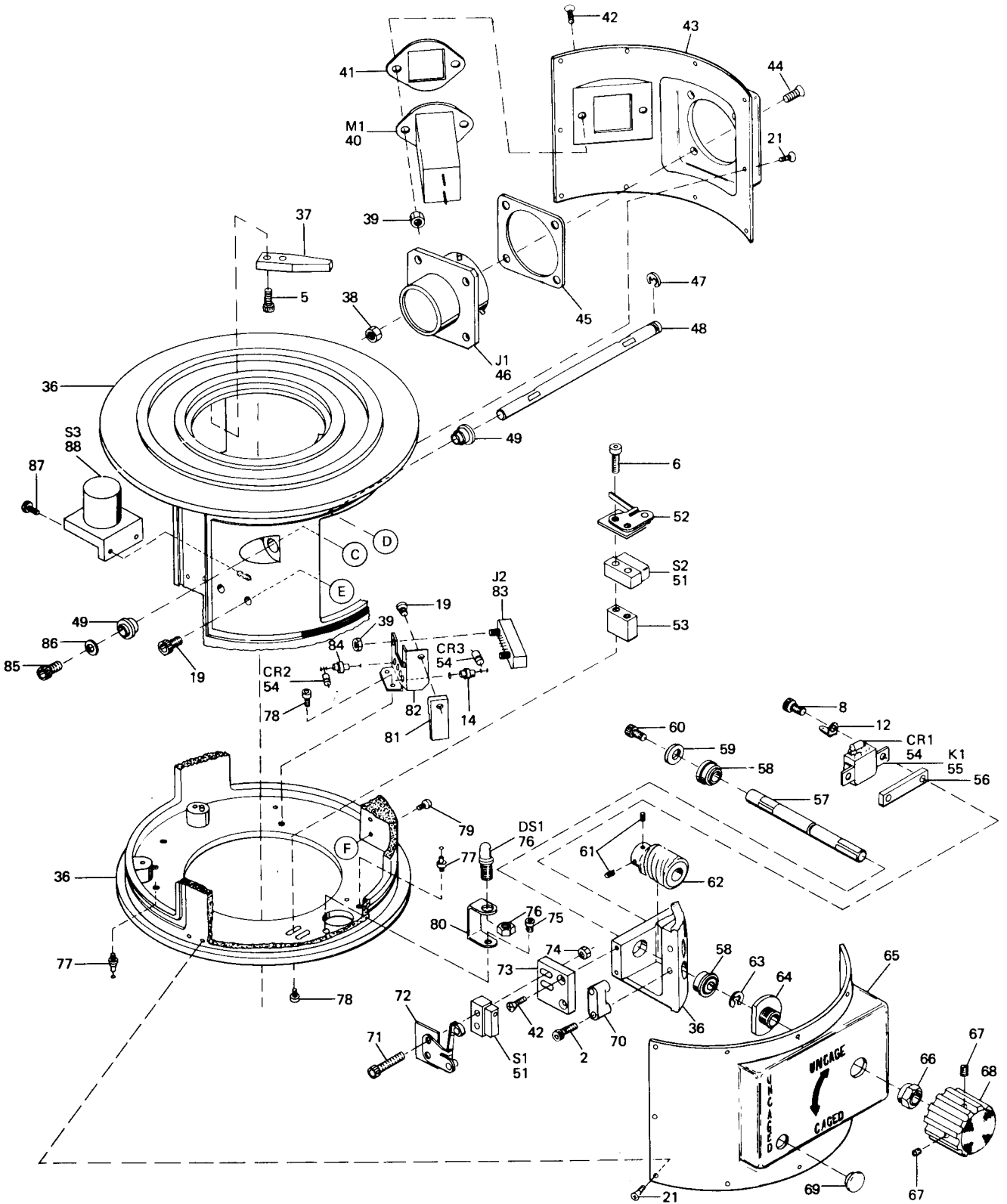
Figure 4 Readout illumination assembly.



TS 006249

Figure 8. Telescope assembly.

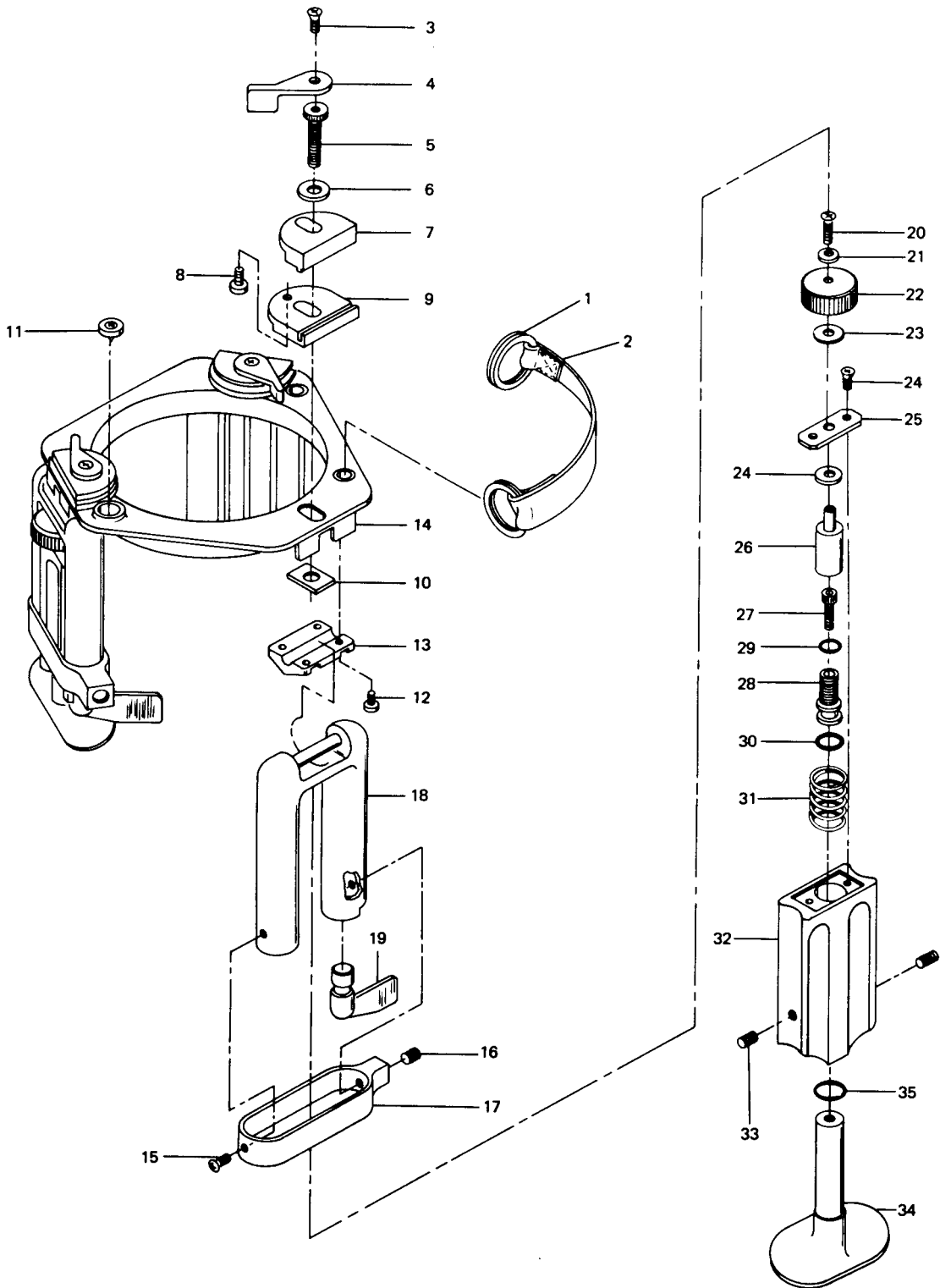
(1) ILLUSTRATION (A) FIG NO	(B) ITEM NO	(2) SMR CODE	(3) NATIONAL STOCK NUMBER	(4) PART NUMBER	(5) FSCM	TMS-6675-250-20P (6) DESCRIPTION	USABLE ON CODE	(7) INC U/M	(8) QTY IN UNIT
8		XBDZZ		112-760-2019	01122	COVER ASSEMBLY		EA	1
8	15	XBDZZ		917-351-0220	01122	COVER: HARD RUBBER		EA	1
8	16	XAOZZ		944-134-5000	01122	SPRING, CONDUCTOR: GOLD PLATED		EA	1
8	17	XBDZZ		112-760-2020	01122	COVER, GERMAN SILVER		EA	1
8	18	PAOZZ	6240-00-763-7744	MS25237-387	96906	LAMP		EA	1
8	19	XBDZZ		930-115-4000	01122	SCREW, CYLINDER HEAD: BRASS		EA	1



TS 006251

Figure 16 Upper housing assembly (Sheet 2 of 3).

(1) ILLUSTRATION (A) FIG NO	(B) ITEM NO	(2) SMR CODE	(3) NATIONAL STOCK NUMBER	(4) PART NUMBER	(5) FSCM	TMS-6675-250-20P DESCRIPTION	USABLE ON CODE	(7) INC U/M	(8) QTY IN UNIT
						0102 - UPPER HOUSING ASSEMBLY			
16	67	PAOZZ	5305-00-877-6285	MS51029-18	96906	SETSCREW		EA	2
16	68	PAOZZ		13218E3544	97403	KNOB, CAGING		EA	1



TS 006253

Figure 20 Tripod assembly.

(1) ILLUSTRATION (A) FIG NO	(B) ITEM NO	(2) SMR CODE	(3) NATIONAL STOCK NUMBER	(4) PART NUMBER	(5) FSCM	TMS-6675-250-20P DESCRIPTION	USABLE ON CODE	(7) INC U/M	(8) QTY IN UNIT
						0104 - TRIPOD ASSEMBLY			
20		PAOOD		13218E3550	97403	TRIPOD ASSEMBLY		EA	1
20	1	PAOZZ	5340-00-561-1553	13218E3589	97403	KEY RING		EA	2
20	2	PAOZZ		13218E3572	97403	HANDLE, TRIPOD		EA	1
20	3	PAOZZ	5305-00-770-2533	MS51959-13	96906	SCREW, MACHINE: NO. 4-40 UMC-2A X 0.25 IN. LG		EA	3
20	4	PAOZZ		13218E3565	97403	ARM, LOCKING		EA	3
20	5	PAOZZ		13218E3564	97403	BOLT, MACHINE: SERRATED HEAD		EA	3
20	6	PAOZZ	5310-00-515-7449	AN960C416L	88044	WASHER, FLAT: 0.25 IN. NOMINAL		EA	3
20	7	PAOZZ		13218E3575	97403	CLAMP, FLOATING, UPPER		EA	3
20	8	PAOZZ		13218E3566	97403	SCREW, EXTERNALLY RELIEVED BODY		EA	3
20	9	PAOZZ		13218E3562	97403	CLAMP, FLOATING, LOWER		EA	3
20	10	PAOZZ		13218E3563	97403	NUT, PLAIN, RECTANGULAR		EA	3
20	11	PAOZZ		13218E3567	97403	LEVEL, UNMOUNTED, CIRCULAR		EA	3
20	12	PAOZZ	5305-00-456-0001	MS21295-13	96906	SCREW, CAP, SOCKET HEAD: NO. 4-40 UNC-2A X 0.38 IN. LG		EA	12
20	13	PAOZZ		13218E3555	97403	CAP, PIVOT PIN		EA	3
20	14	PAOZZ		13218E3551	97403	HEAD, TRIPOD		EA	1
20	15	PAOZZ	5305-00-054-5649	MS51957-15	96906	SCREW, MACHINE: NO. 4-40 UMC-2A X 0.38 IN. LG		EA	3
20	16	PAOZZ		MS51045-64	96906	SETScrew		EA	3
20	17	PAOZZ		13218E3556	97403	BAND, CLAMPING		EA	3
20	18	XBOZZ		13218E3552	97403	LEG, TRIPOD		EA	3
20	19	XBDZZ		13218E3557	97403	CAM, LEVER, LOCK		EA	3
20	20	PAOZZ	5305-00-068-5276	MS16995-9	96906	SCREW, MACHINE: NO. 4-40 UMC-2A X 0.25 IN. LG		EA	3
20	21	PAOZZ	5310-00-782-1349	MS15795-804	96906	WASHER, FLAT: NO. 4		EA	3
20	22	XBOZZ		13218E3561	97403	KNOB: FINE LEVELING		EA	3
20	23	XBOZZ		13218E3559	97403	WASHER, THRUST		EA	6
20	24	PAOZZ	5305-00-770-2533	MS51959-13	96906	SCREW, MACHINE: NO. 4-40 UMC-2A X 0.25 IN. LG		EA	6
20	25	XBDZZ		13218E3560	97403	PLATE, RETAINING		EA	3
20	26	XBOZZ		13218E3558	97403	NUT, PLAIN, ROND: FINE LEVEL		EA	3
20	27	PAOZZ	5305-00-959-0382	MS16995-17	96906	SCREW, MACHINE: NO. 6-32 UNC-2A X 0.38 IN. LG		EA	3
20	28	XBOZZ		13218E3576	97403	BUSHING, THREADED: FINE LEVEL		EA	3
20	29	PCOZZ	5330-00-582-7476	MS9021-12	96906	PAKING, PREFORMED		EA	3
20	30	PCOZZ	5330-00-551-9574	MS9021-014	96906	PACKING, PREFORMED		EA	3
20	31	PAOZZ	5360-00-719-7431	13218E3577	97403	SPRING, HELICAL COMPRESSION		EA	3
20	32	XBOZZ		13218E3553	97403	LEG, EXTENSION		EA	3
20	33	PAOZZ		AN565CC8H10	88044	SETScrew: NO. 8-32 UNC-2A X 0.62 IN. LG		EA	3
20	34	XBOZZ		13218E3554	97403	SPADE		EA	3
20	35	PCOZZ	5330-00-558-2310	MS9021-013	96906	PACKING, PREFORMED		EA	3

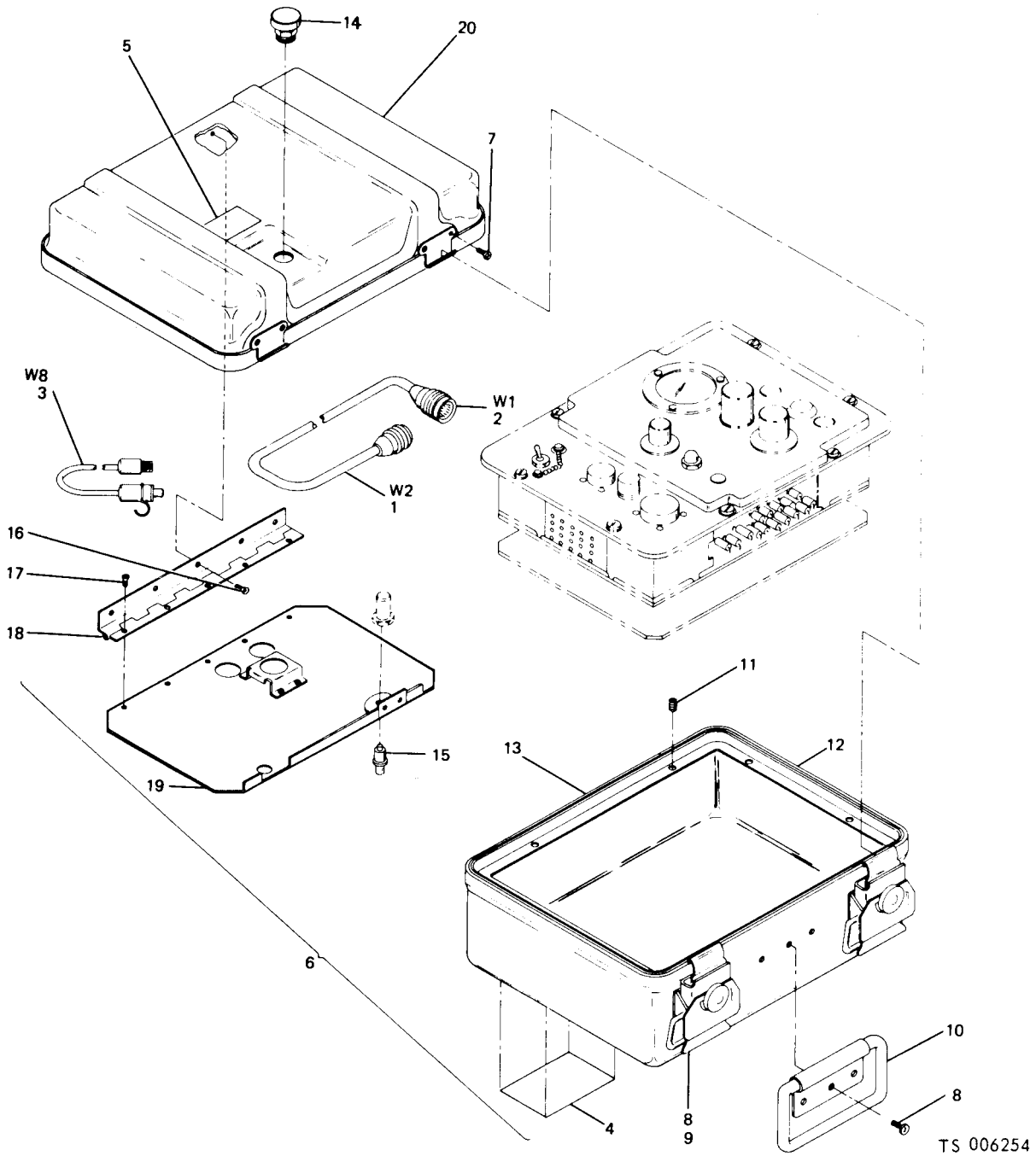
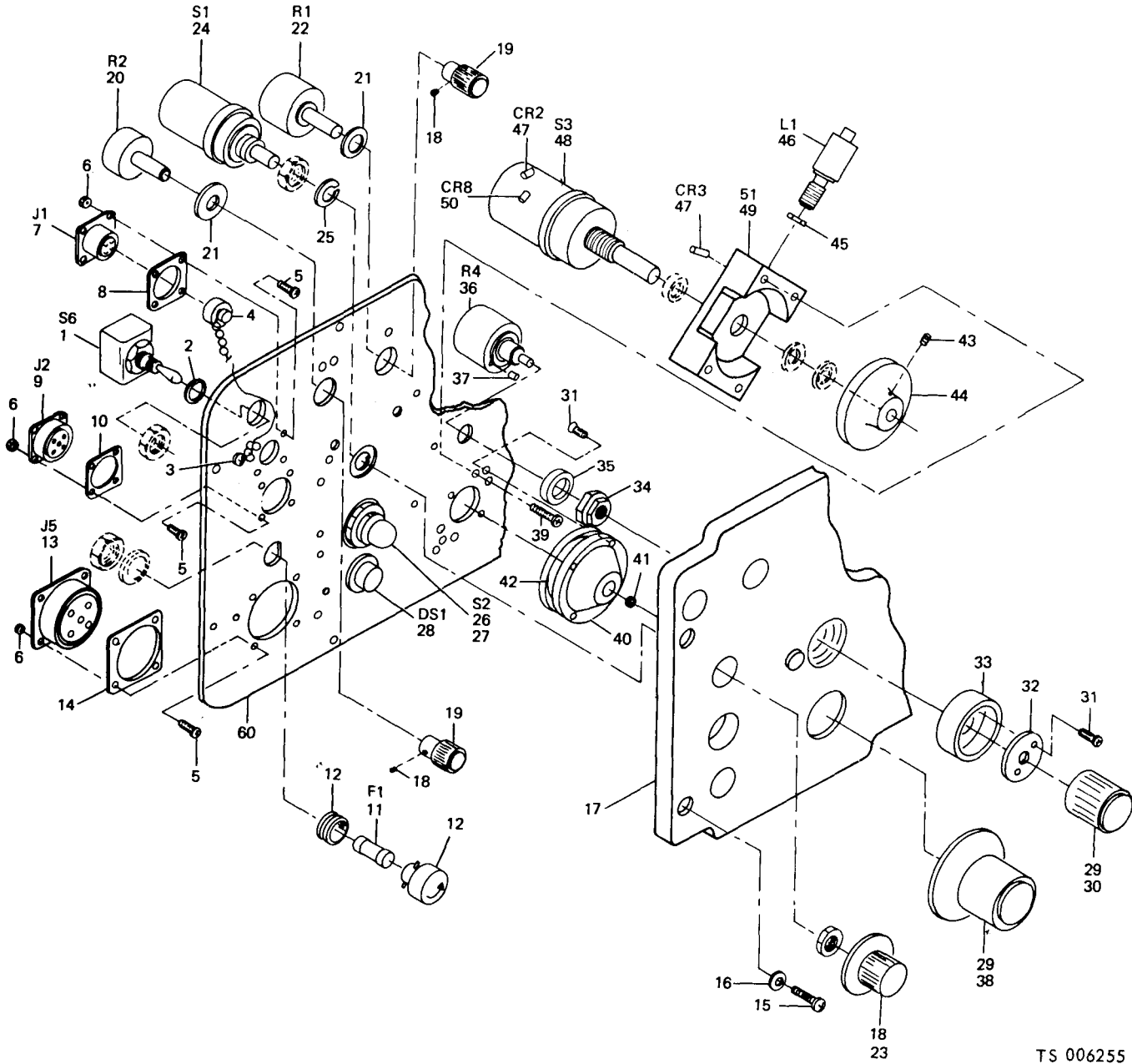


Figure 21 Electronic control unit.



(1) ILLUSTRATION (A) FIG NO	(B) ITEM NO	(2) SMR CODE	(3) NATIONAL STOCK NUMBER	(4) PART NUMBER	(5) FSCM	TMS-6675-250-20P DESCRIPTION	USABLE ON CODE	(7) INC U/M	(8) QTY IN UNIT
						GROUP 02 - ELECTRONIC CONTROL UNIT			
						0201 - CASE			
21		PBODD		13218E3200	97403	ELECTRONIC CONTROL UNIT		EA	1
21	1	XBOZZ		13218E3408	97403	CABLE ASSEMBLY, ELECTRICAL: DC POWER		EA	1
21	2	XBOZZ		13218E3407	97403	CABLE ASSEMBLY, ELECTRICAL: INTERCONNECT		EA	1
21	3	PAOZZ		13218E3427	97403	HANDICAP ASSEMBLY		EA	1
21	5	XBOZZ		13218E3339	97403	DECAL: PRESSURE RELIEF VALVE		EA	1
21	6	XBOZZ		13218E3202	97403	CASE, ELECTRONIC CONTROL UNIT		EA	1
21	7	PAOZZ	5305-00-889-3116	MS35206-215	96906	SCREW, MACHINE: NO. 4-40 UMC-2A X 0.39 IN. LG		EA	8
21	8	PAOZZ		MS35206-219	96906	SCREW, MACHINE: NO. 4-40 UMC-2A X 0.75 IN. LG		EA	11
21	9	PAOZZ		13218E3337	97403	FASTENER, TWIST LOCK		EA	4
21	11	PAOZZ		MS21209C610	96906	INSERT, HELICAL COIL: NO. 6-32 UMC-2B		EA	8
21	12	PAOZZ		13218E3366-1	97403	TUBING, SILICONE		EA	V
21	14	PAOZZ	4820-00-898-3003	13218E3333	97403	VALVE, PRESSURE RELIEF		EA	1
21	15	PAOZZ		13218E3336	97403	FASTENER, PUSHBUTTON		EA	2



TS 006255

(1) ILLUSTRATION (A) FIG NO	(B) ITEM NO	(2) SMR CODE	(3) NATIONAL STOCK NUMBER	(4) PART NUMBER	(5) FSCM	TMS-6675-250-20P DESCRIPTION	USABLE ON CODE	(7) INC U/M	(8) QTY IN UNIT
						0203 - PANEL ASSEMBLY			
23	3	PAOZZ	5305-00-054-5651	MS51957-17	96906	SCREW, MACHINE: NO. 4-40 UMC-2A X 0.50 IN. LG		EA	1
23	4	PAOZZ	5935-00-892-9093	MS3181-8C	96906	COVER, CONNECTOR, RECEPTACLE		EA	1
23	11	PAOZZ		FM03-250V3A	81349	FUSE: STYLE F03, 3 AMP, 250V		EA	1
23	18	PAOZZ	5305-00-724-6778	MS51965-9	96906	SETScrew: NO. 4-40 UNC-3A X 0.187 IN. LG		EA	8
23	19	PAOZZ	5355-00-877-8515	MS91528-0C1B	96906	KNOB, CONTROL: PANEL ILLUM, OR THEO BRT		EA	2
23	23	PAOZZ	5355-00-989-4269	MS91528-102B	96906	KNOB, CONTROL: TEST SELECT		EA	1
23	28	PAOZZ	6210-01-007-5188	13218E3319-1	97403	LIGHT, INDICATOR		EA	4
23	29	PAOZZ	5305-00-724-6783	MS51965-29	96906	SETScrew: NO. 6-32 UMC-3A X 0.25 IN. LG		EA	4
23	30	PAOZZ	5355-00-619-4668	MS91528-2N2B	96906	KNOB, CONTROL: BIAS		EA	1
23	38	PAOZZ	5355-00-619-3835	MS91528-202B	96906	KNOB, CONTROL: MODE SELECT		EA	1
23	39	PAOZZ	5305-00-054-5647	MS51957-13	96906	SCREW, MACHINE: NO. 4-40 UMC-2A X 0.250 IN. LG		EA	4
23	43	PAOZZ	5305-00-724-6678	MS51965-9	96906	SETScrew: NO. 4-40 UMC-3A X 0.19 IN. LG		EA	2

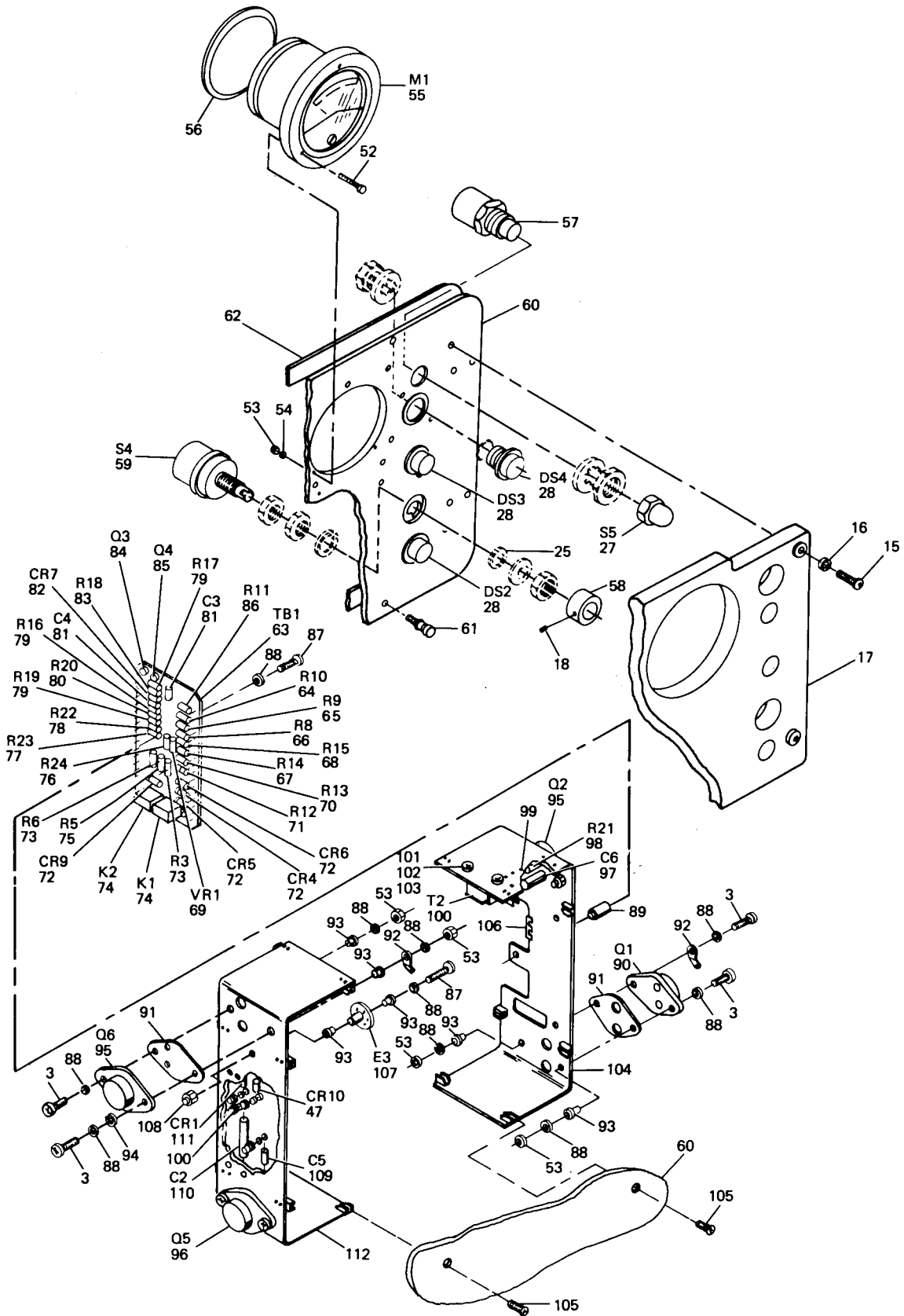
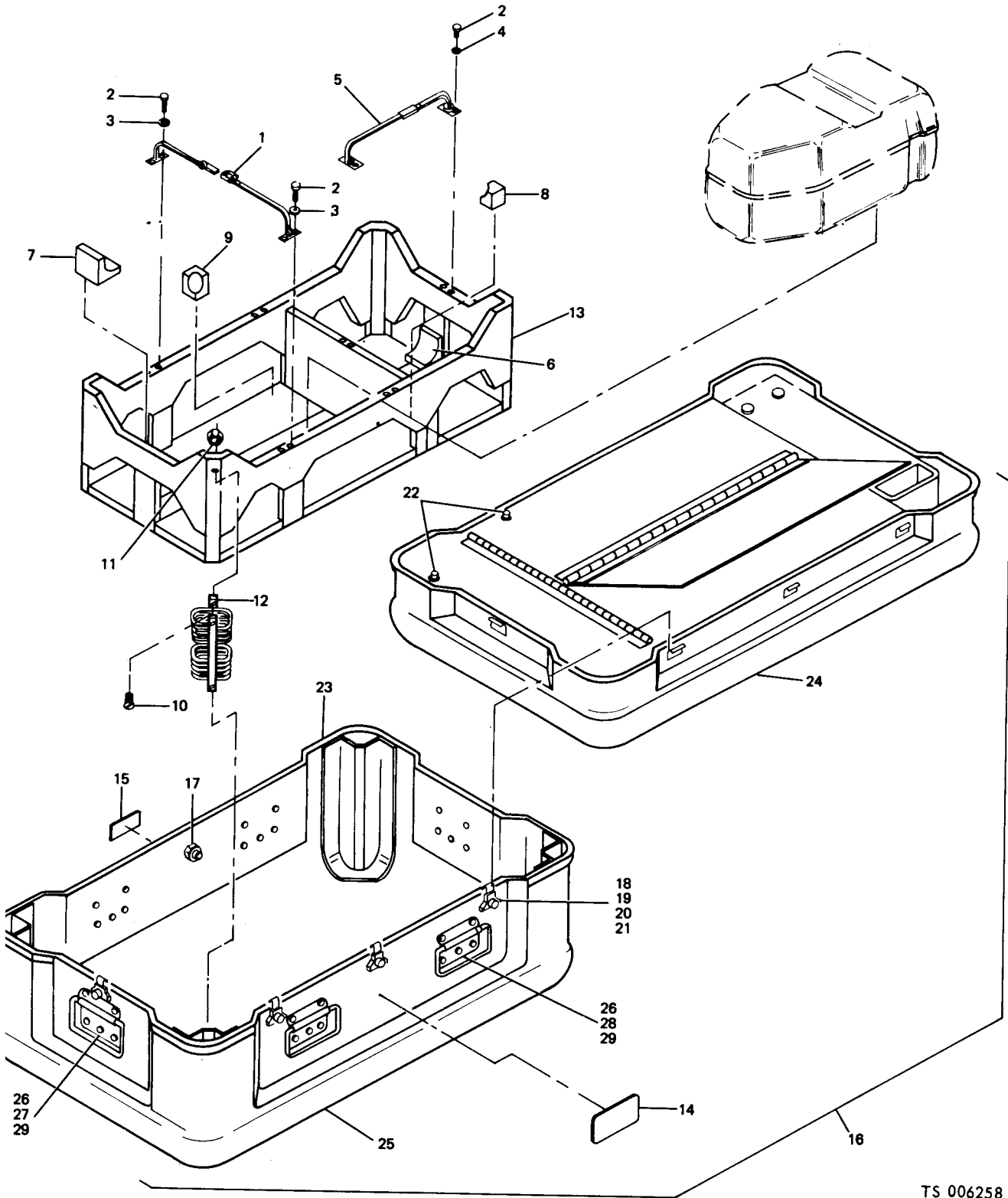


Figure 23 Electronic control unit panel (Sheet 2 of 3).

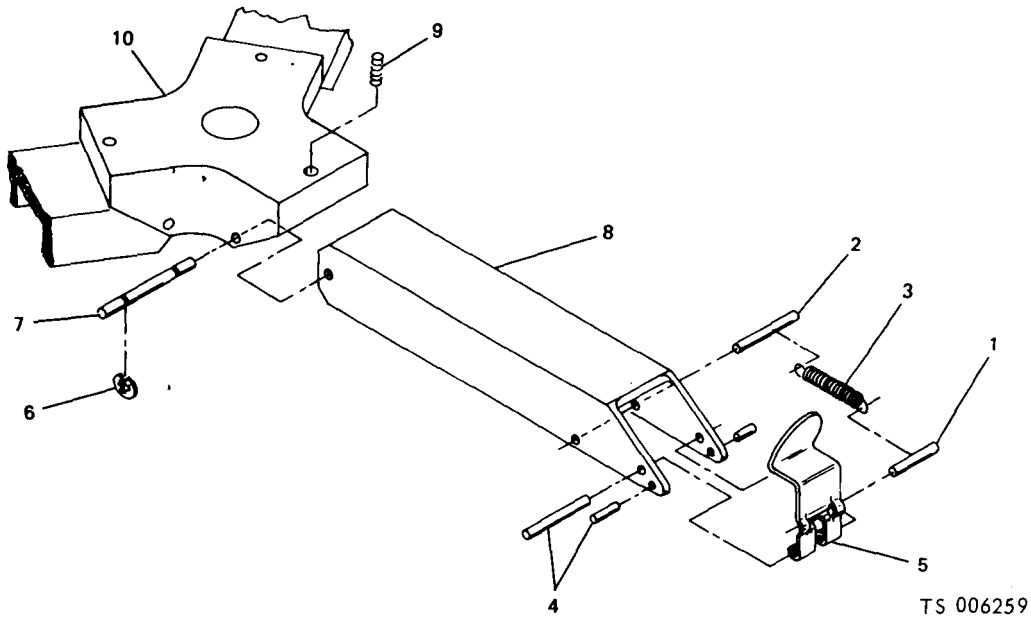
(1) ILLUSTRATION (A) FIG NO	(B) ITEM NO	(2) SMR CODE	(3) NATIONAL STOCK NUMBER	(4) PART NUMBER	(5) FSCM	TMS-6675-250-20P DESCRIPTION	USABLE ON CODE	(7) INC U/M	(8) QTY IN UNIT
23	58	PAOZZ		13218E3306	97403	KNOB, LITITUDE		EA	1
23	61	PAOZZ	5325-01-008-1296	13218E3340-2	97403	SCREW ASSEMBLY: CAPTIVE		EA	1
23	62	PAOZZ		13218E3204	97403	GASKET, PANEL		EA	1



TS 006258

Figure 24 Transport case assembly.

(1) ILLUSTRATION (A) FIG NO	(2) (B) ITEM NO	(3) SMR CODE	(4) NATIONAL STOCK NUMBER	(5) PART NUMBER	(6) FSCM	TMS-6675-250-20P DESCRIPTION	USABLE ON CODE	(7) INC U/M	(8) QTY IN UNIT
						GROUP 03 - TRANSPORT CASE			
24	12	XBDZZ		13218E3003	97403	ISOLATION SYSTEM		EA	4
24	13	XBOZZ		13218E3005	97403	RACK		EA	1
24	15	XBDZZ		13218E3339	97403	DECAL: PRESSURE RELIEF VALVE		EA	1
24	16	XBDZZ		13218E3002	97403	TRANSPORT CASE ASSEMBLY		EA	1
24	17	PAOZZ	4820-00-898-3003	13218E3333	97403	VALVE, PRESSURE RELIEF		EA	1
24	18	PAOZZ	5305-00-889-3116	MS35206-215	96906	SCREW, MACHINE, PANHEAD: NO. 4-40 UMC-2A X 0.38 IN. LG		EA	40
24	19	PAOZZ		13218E3337	97403	CATCH, WING		EA	10
24	20	XBOZZ		13218E3206-3	97403	STANDOFF, THREADED		EA	20
24	21	XBOZZ		13218E3206-4	97403	STANDOFF, THREADED		EA	20
24	22	PAOZZ		13218E3336	97403	FASTENER, PUSH BOTTON		EA	8
24	23	PAOZZ		13218E3366-2	97403	TUBING, SILICONE		EA	V
		XBOZZ		13218E3409	97403	CABLE ASSEMBLY: DC PWR EXTENSION, W3		EA	1
		XBOZZ		13218E3410	97403	CABLE ASSEMBLY: AC PWR. W4		EA	1
		XBOZZ		13218E3411	97403	CABLE ASSEMBLY: DC PWR ADAPTER, W5		EA	1
		XBOZZ		13218E3412	97403	CABLE ASSEMBLY: JUMPER, W6		EA	1
		XBOZZ		13218E3413	97403	CABLE ASSEMBLY, BATTERY ADAPTER, W7		EA	1
		XBOZZ		13218E3017	97403	HARNES, SHOULDER		EA	2
		XBOZZ		13218E3021	97403	HARNES, WAIST STRAP		EA	1
		PAOZZ		13218E3544	97403	KNOB, CAGING: UPPER HOUSING ASSEMBLY		EA	1
		PAOZZ	6240-00-763-7744	MS18209-387	96906	LAMP: THEODOLITE		EA	2
		PAOZZ	5355-00-057-7794	MS91528-0C1B	96906	KNOB: PANEL ILLUM, OR THEO BRT, ELECTRONIC CONTROL PANEL		EA	1
		PAOZZ	5355-00-989-4269	MS91528-102B	96906	KNOB: TEST SELECT, ELECTRONIC CONTROL PANEL		EA	1
		PAOZZ	5355-00-619-4668	MS91528-2N2B	96906	KNOB: UNICAGE, ELECTRONIC CONTROL PANEL		EA	1
		PAOZZ	5355-00-619-3835	MS91528-202B	96906	KNOB: MODE SELECT, ELECTRONIC CONTROL PANEL		EA	1
		PAOZZ		MILF23419FM03-250V	81349	FUSE: 3 AMP		EA	5
		PAOZZ		MILA46106RTV103BLA	81349	ADHESIVE-SEALANT, SILICONE		EA	V
		PAOZZ		GG0-671TYPE1CLASSA	81348	ORANGEWOOD STICKS		PK	1
		PAOZZ		CCCC46TYPE1CLASS1	81348	CLOTH, CLEANING: 18.0 X 18.0 IN.		EA	2
		PAOZZ		GGGK275TYPE1CLASSA	81348	KEY SET: HEXAGON, SOCKET HEAD SCREW, 13 PIECE, SIZE 0.028 THRU 0.2		EA	1
		PAOZZ	5120-00-555-2389	GGGS121TYPEV1CLASS	81348	SCREWDRIVE, CROSS TIP: 3.00 IN. BLADE, POINT SIZE NO. 1		EA	1
		PAOZZ	5120-00-596-7293	GGGS121TYPE1CLASS1	81348	SCREWDRIVER, FLAT TIP: 3.00 IN. BLADE, TIP WIDTH 0.25 IN.		EA	1
		PAOZZ		NNNP40TYPE1CLASS1	81348	TISSUE, LENS		PK	3
		PAOZZ	5970-00-926-7219	HH1595	81348	TAPE, PLASTIC: 1/2 IN. WIDE		PL	1
		XBOZZ		13218E3022	97403	CASE, WINTERIZATION		EA	1
		PAOZZ		13218E7300	97403	WIND SHELTER ASSEMBLY		EA	1
		PAOZZ		13218E7301	97403	PANEL, UPPER		EA	1
		PAOZZ		13218E7299	97403	PANEL, LOWER		EA	1
		PAOZZ		13218E7292	97403	STAKE		EA	12
		PAOZZ		13218E4605	97403	CARRYING CASE		EA	1
		PAOZZ		13218E3075	97403	TIE DOWN STRAPS		EA	
		PAOZZ		13218E3076	97403	RAILS		EA	

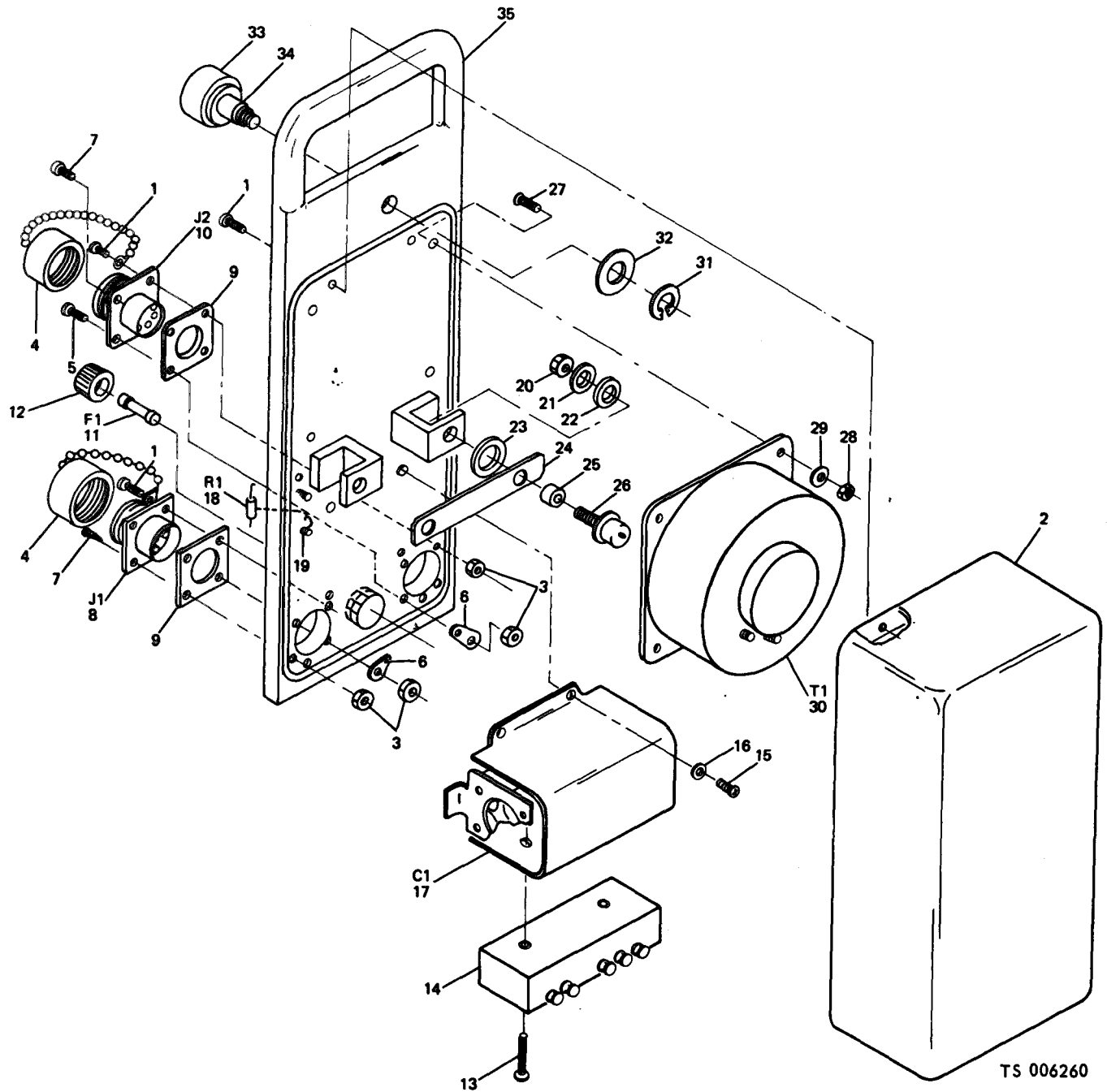


TS 006259

(1) ILLUSTRATION		(2)	(3)	(4)	(5)	(6)	(7)	(8)
(a) FIG NO.	(b) ITEM NO.	SNR CODE	NATIONAL STOCK NUMBER	PART NUMBER	FSCM	DESCRIPTION	U/M	QTY INC IN UNIT
25		PAOZZ	6675-01-006-3619	13218E3580	97403	TRIPOD ADAPTER ASSEMBLY	EA	1
25	1	PAOZZ		MS171439	96906	PIN, SPRING: 0.062 IN. DIA X 0.69 IN. LG	EA	3
25	2	PAOZZ		MS171504	96906	PIN, SPRING: 0.094 IN. DIA X 1.00 IN. LG	EA	3
25	3	XBOZZ		13218E3574	97403	SPRING, EXTENSION	EA	3
25	4	PAOZZ		MS171494	96906	PIN, SPRING: 0.094 IN. DIA X 0.38 IN. LG	EA	12
25	5	XBOZZ		13218E3585	97403	LATCH, SPADE	EA	3
25	6	PAOZZ	5365-00-725-0969	MS16633-4018	96906	RING, RETAINING	EA	6
25	7	XBOZZ		13218E3569	97403	PIN, PIVOT	EA	3
25	8	XBOZZ		13218E3581	97403	ARM, SUPPORT	EA	3
25	9	PAOZZ	5305-00-054-6869	MS51031-48	96906	SETSCREW	EA	3
25	10	XAOZZ		13218E3582	97403	HUB, PIVOT	EA	1

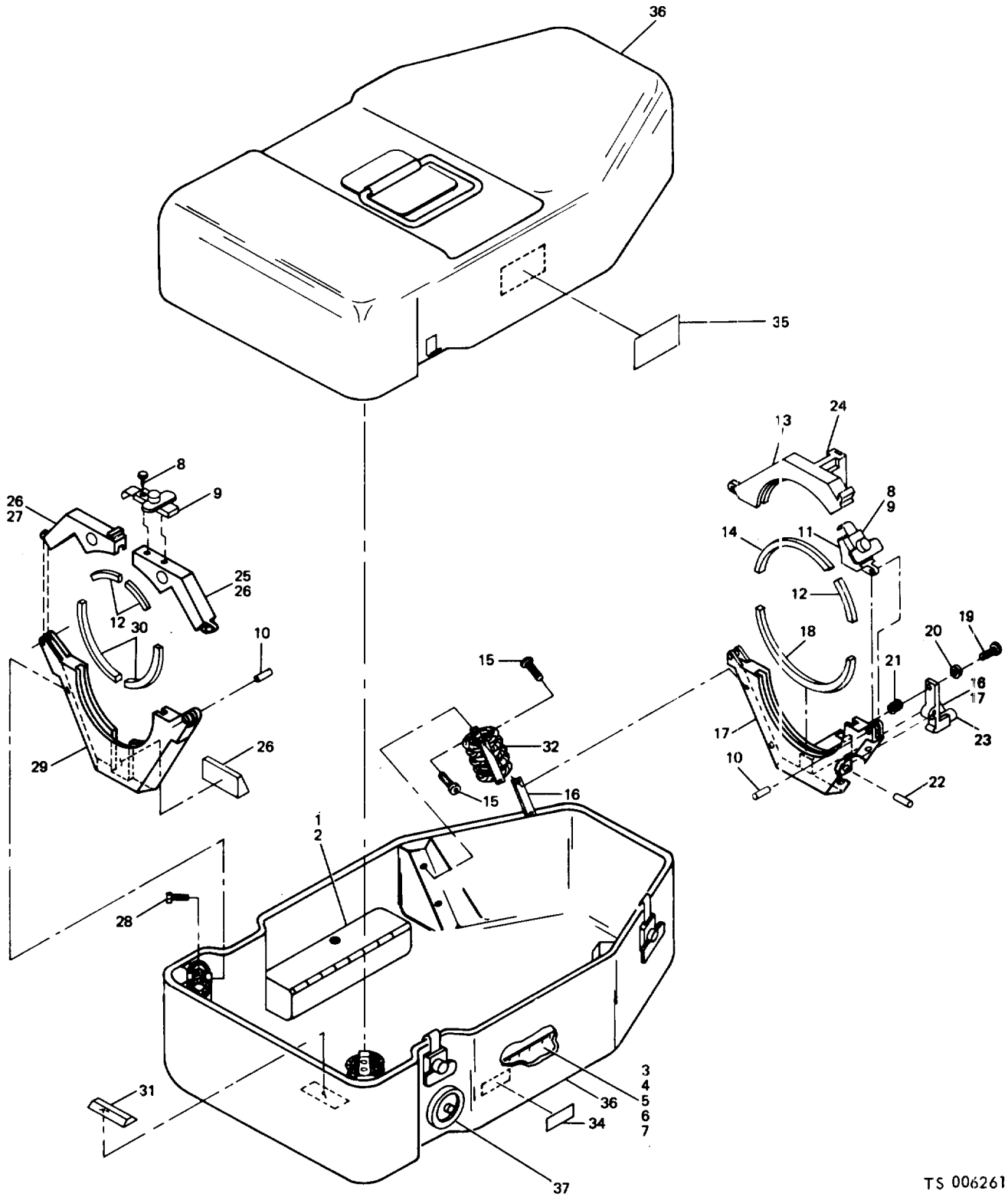
Figure 25 Tripod adapter assembly.





(1) ILLUSTRATION		(2)	(3)	(4)	(5)	(6)	(7)	(8)
(a) FIG NO.	(b) ITEM NO.	SNR CODE	NATIONAL STOCK NUMBER	PART NUMBER	PSCM	DESCRIPTION	U/M	QTY INC IN UNIT
Usable On Code								
GROUP 04 - AC-DC CONVERTER ASSEMBLY								
26		PAOFF		13218E3900	97403	AC-DC CONVERTER	EA	1
26	1	PAOZZ	5305-00-054-5652	MS51957-18	96906	SCREW, MACHINE; NO. 4-40 UNC-2A X 0.63 IN. LG	EA	8
26	4	PAOZZ	5935-00-904-4469	MS3181-12C	96906	CAP, PROTECTIVE	EA	2
26	11	PAOZZ		MILF23149FM03-250L	81349	FUSE; 3 AMP, 250V, F1	EA	1
26	33	PAOZZ		MS91528-2N2B	96906	KNOB	EA	1

Figure 26. AC-DC converter.



TS 006261

Figure 27. Transit case assembly.

(1) ILLUSTRATION (A) FIG NO	(B) ITEM NO	(2) SMR CODE	(3) NATIONAL STOCK NUMBER	(4) PART NUMBER	(5) FSCM	TM5-6675-250-20P DESCRIPTION	USABLE ON CODE	(7) INC U/M	(8) QTY IN UNIT
GROUP 05 - TRANSIT CASE									
27		XBOZZ		13218E3100	97403	TRANSIT CASE ASSEMBLY		EA	1
27	1	PAOZZ		13218E3549	97403	COVER, RAIN AND DUST		EA	1
27	2	PAOZZ		13218E3123	97403	BRUSH, LENS		EA	1
27	3	PAOZZ		13218E3502-4	97403	THEODOLITE ACCESSORY: EYEPIECE, PRISM		EA	1
27	4	PAOZZ		13218E3502-5	97403	THEODOLITE ACCESSORY: EYEPIECE, FILTER		EA	1
27	5	PAOZZ		13218E3120	97403	PLUMB BOB ASSEMBLY		EA	1
27	6	PAOZZ	6240-00-763-7744	MS18209-387	96906	LAMP, INCANDESCENT		EA	2
27	7	PAOZZ		MILF23419FM03250V	81349	FUSE: 3 AMP		EA	2
27	8	PAOZZ	5305-00-054-5647	MS51957-13	96906	SCREW, MACHINE: NO. 4-40 UNC-24A X 0.25 IN. LG		EA	4
27	9	PAOZZ		13218E3337	97403	CATCH, WING TURN		EA	2
27	10	PAOZZ	5315-00-817-0612	MS16555-642	96906	PIN, STRAIGHT, HEADLESS		EA	4
27	11	XBOZZ		13218E3106	97403	CLAMP: LEFT, UPPER		EA	1
27	12	XBOZZ		13218E3112-1	97403	LINER		EA	3
27	13	XBOZZ		13218E3105	97403	CLAMP, UPPER, RIGHT		EA	1
27	14	XBOZZ		13218E3112-3	97403	LINER		EA	1
27	15	PAOZZ	5305-00-988-7794	MS24671-30	96906	SCREW, MACHINE: NO. 10-20 UMC-3A X 0.75 IN. LG		EA	12
27	16	XBOZZ		13218E3111	97403	SPACER: ISOLATOR, UPPER		EA	2
27	17	XBOZZ		13218E3104	97403	SUPPORT: REFERENCE UNIT, UPPER		EA	1
27	18	XBOZZ		13218E3112-4	97403	LINER		EA	1
27	19	PAOZZ	5305-00-948-9903	NAS1190C06P14L	80205	SCREW, MACHINE: NO. 6-32 UNC-3A X 0.87 IN. LG		EA	2
27	20	PAOZZ		AN960-6	88044	WASHER, FLAT		EA	2
27	21	XBOZZ		13218E3109	97403	SPRING, COMPRESSION		EA	2
27	22	PAOZZ	5315-00-921-6358	MS16555-637	96906	PIN, STRAIGHT, HEADLESS		EA	2
27	23	XBOZZ		13218E3117-1	97403	ARM, PIVOT		EA	1
27	24	XBOZZ		13218E3117-2	97403	ARM, PIVOT		EA	1
27	25	XBOZZ		13218E3108	97403	CLAMP, LEFT, LOWER		EA	1
27	26	XBOZZ		13218E3114	97403	PAD, RETAINER		EA	2
27	27	XBOZZ		13218E3107	97403	CLAMP: RIGHT, LOWER		EA	1
27	28	PAOZZ	5305-00-057-4913	MS24671-29	96906	SCREW, MACHINE: NO. 10-20 UNC-3A X 0.32 IN. LG		EA	4
27	29	XBOZZ		13218E3103	97403	SUPPORT: REFERENCE UNIT, LOWER		EA	1
27	30	XBOZZ		13218E3112-5	97403	LINER		EA	2
27	31	XBOZZ		13218E3125	97403	BUMPER, SNUBBING		EA	1
27	32	XBOZZ		13218E3110-1	97403	ISOLATOR SYSTEM, TRANSIT CASE		EA	2
27	33	XBDZZ		13218E3110-2	97403	ISOLATOR SYSTEM, TRANSIT CASE		EA	2
27	34	XBOZZ		13218E3339	97403	DECAL: PRESSURE RELIEF VALVE		EA	1
27	35	XBOZZ		13218E3203-3	97403	PLATE, IDENTIFICATION		EA	1
27	36	XBOZZ		13218E3101	97403	CASE, TRANSIT		EA	1
27	37	PAOZZ	4820-00-893-3003	13218E3333	97403	VALVE, PRESSURE RELIEF		EA	1

(1) ILLUSTRATION (A) FIG NO	(B) ITEM NO	(2) SMR CODE	(3) NATIONAL STOCK NUMBER	(4) PART NUMBER	(5) FSCM	TMS-6675-250-20P DESCRIPTION	USABLE ON CODE	(7) INC U/M	(8) QTY IN UNIT
SECTION III - SPECIAL TOOLS									
1	PBFZZ	6675-00-035-3903	13218E3373	97403	ADJUSTING TOOL: UPPER BAND CLAMP		EA	1	
2	PBFZZ	6675-00-035-3875	13218E3372	97403	SETTING TOOL: ANTI-BACKLASH GEAR		EA	1	
3	PBFDD	6675-00-035-3774	13218E3055	97403	INTERCONNECT BREAKOUT BOX		EA	1	
4	PBFZZ	6675-00-035-3371	13218E3058	97403	CABLE ASSEMBLY: EXTENDER		EA	1	
5	PBFZZ	5120-00-890-7816	TQS6FU	55719	TORQUE DRIVER: SCREWDRIVE TYPE, 0-75 INCH LB		EA	1	
	PBFZZ	5120-00-421-0498	TMP01	55719	PHILLIPS DRIVER: SIZE NO. 0		EA	1	
	PBFZZ	5120-00-180-0876	TMP12A	55719	PHILLIPS DRIVER: SIZE NO. 1		EA	1	
	PBFZZ	5120-00-044-1718	TMA4-1-2	55719	HEXAGON HEAD DRIVER: 9/64 IN.		EA	1	
	PBFZZ		TMX60	55719	EXTENSION BAR: 5/16 IN. SHANK DIA, OVERALL LENGTH 6 IN.		EA	1	
6	PBFZZ		503	51209	PRECISION DC CURRENT METER (1 MICROAMP) DYNAMICS NUMBER 503, OR EQUIVALENT		EA	1	
7	PAOZZ		115-882-0009	01122	HORIZONTAL CIRCLE SETTING TOOL		EA	1	

SECTION IV INDEX-NATIONAL STOCK NUMBER AND REFERENCE NUMBER  
 CROSS-REFERENCE TO FIGURE AND ITEM NUMBER

STOCK NUMBER	FIG NO	ITEM NO	STOCK NUMBER	FIG NO	ITEM NO
4820-00-893-3003	27	37			
4820-00-898-3003	21	14			
	24	17			
5120-00-555-2389	24				
5120-00-596-7293	24				
5305-00-054-5647	23	39			
	27	8			
5305-00-054-5649	20	15			
5305-00-054-5651	23	3			
5305-00-054-5652	26	1			
5305-00-054-6869	25	9			
5305-00-057-4913	27	28			
5305-00-068-5276	20	20			
5305-00-456-0001	20	12			
5305-00-724-6678	23	43			
5305-00-724-6778	23	18			
5305-00-724-6783	23	29			
5305-00-770-2533	20	24			
5305-00-877-6285	16	67			
5305-00-889-3116	21	7			
	24	18			
5305-00-948-9903	27	19			
5305-00-959-0382	20	27			
5305-00-988-7794	27	15			
5310-00-515-7449	20	6			
5310-00-782-1349	20	21			
5315-00-817-0612	27	10			
5315-00-921-6358	27	22			
5325-01-008-1296	23	61			
5330-00-551-9574	20	30			
5330-00-558-2310	20	35			
5330-00-582-7476	20	29			
5340-00-561-1553	20	1			
5355-00-057-7794	24				
5355-00-619-3835	23	38			
	24				
5355-00-619-4668	23	30			
	24				
5355-00-877-8515	23	19			
5355-00-989-4269	23	23			
	24				
5360-00-719-7431	20	31			
5365-00-725-0969	25	6			
5935-00-892-9093	23	4			
5935-00-904-4469	26	4			
5970-00-926-7219	24				
6210-00-007-5188	23	28			
6240-00-763-7744	4	4			
	8	18			
	24				
	27	6			
6675-01-006-3619	25				

SECTION IV. INDEX-NATIONAL STOCK NUMBER AND REFERENCE NUMBER  
 CROSS-REFERENCE TO FIGURE AND ITEM NUMBER

REFERENCE NO	MFR CODE	FIG NO	ITEM NO	REFERENCE NO	MFR CODE	FIG NO	ITEM NO
AN565CC8H10	88044	20	33	13218E3100	97403	27	
AN960-6	88044	27	20	13218E3101	97403	27	36
AN960C416L	88044	20	6	13218E3103	97403	27	29
CCCC46TYPE1CLASS1	81363	24		13218E3104	97403	27	17
FM03-250V3A	81349	23	11	13218E3105	97403	27	13
GGGK275TYPE1CLASSA	81348	24		13218E3106	97403	27	11
GGGS121TYPE1CLASS1	81348	24		13218E3107	97403	27	27
GGGS121TYPEVICLASS	81348	24		13218E3108	97403	27	25
GGO-671TYPE1CLASSA	81348	24		13218E3109	97403	27	21
HHI595	81348	24		13218E3110-1	97403	27	32
LAM2304	01122	4	12	13218E3110-2	97403	27	33
MILA46106RTV103BLA	81349	24		13218E3111	97403	27	16
MILF23149FM03-250V	81349	26	11	13218E3112-1	97403	27	12
MILF23419FM03-250V	81349	24		13218E2112-3	97403	27	14
MILF23419FM03250V	81349	27	7	13218E8112-4	97403	27	18
MS15795-804	96906	20	21	13218E3112-5	97403	27	30
MS16555-637	96906	27	22	13218E3114	97403	27	26
MS16555-642	96906	27	10	13218E3117-1	97403	27	23
MS16633-4018	96906	25	6	13218E3117-2	97403	27	24
MS16995-17	96906	20	27	13218E3120	97403	27	5
MS16995-9	96906	20	20	13218E3123	97403	27	2
MS171439	96906	25	1	13218E3125	97403	27	31
MS171494	96906	25	4	13218E3200	97403	21	
MS171504	96906	25	2	13218E3202	97403	21	6
MS18209-387	96906	24		13218E3203-3	97403	27	35
	96906	27	6	13218E3204	97403	23	62
MS21209C610	96906	21	11	13218E3206-3	97403	24	20
MS21295-13	96906	20	12	13218E3206-4	97403	24	21
MS24671-29	96906	27	28	13218E3306	97403	23	58
MS24671-30	96906	27	15	13218E3319-1	97403	23	28
MS25237-387	96906	4	4	13218E3333	97403	21	14
	96906	8	18		97403	24	17
MS3181-120	96906	26	4		97403	27	37
MS3181-8C	96906	23	4	13218E3336	97403	21	15
MS35206-215	96906	21	7		97403	24	22
	96906	24	18	13218E3337	97403	21	9
MS35206-219	96906	21	8		97403	24	19
MS51029-18	96906	16	67		97403	27	9
MS51031-48	96906	25	9	13218F3339	97403	21	5
MS51045-64	96906	20	16		97403	24	15
MS51957-13	96906	23	39		97403	27	34
	96906	27	8	13218E3340-2	97403	23	61
MS51957-15	96906	20	15	13218E3366-1	97403	21	12
MS51957-17	9696	23	3	13218E3366-2	97403	24	23
MS51957-18	96906	26	1	13218E3407	97403	21	2
MS51959-13	96906	20	24	13218E3408	97403	21	1
MS51965-29	96906	23	29	13218E3409	97403	24	
MS51965-9	96906	23	18	13218E3410	97403	24	
	96906	23	43	13218E3411	97403	24	
MS9021-013	96906	20	35	13218E3412	97403	24	
MS9021-014	96906	20	30	13218E3413	97403	24	
MS9021-12-12	96906	20	29	13218E3427	97403	21	3
MS91528-0C1B	96906	23	19	13218E3502-4	97403	27	3
	96906	24		13218E3502-5	97403	27	4
MS91528-102B	96906	23	23	13218E3544	97403	16	68
	96906	24			97403	24	
MS91528-2N2B	96906	23	30	13218E3549	97403	27	1
	96906	24		13218E3550	97403	20	
	96906	26	33	13218E3551	97403	20	14
MS91528-202B	96906	23	38	13218E3552	97403	20	18
	96906	24		13218E3553	97403	20	32
NAS1190C06P14L	80205	27	19	13218E3554	97403	20	34
NNNP40TYPE1CLASS1	81348	24		13218E3555	97403	20	13
ZAM1704	01122	4	13	13218E3556	97403	20	17
ZAM2603	01122	4	22	13218E3557	97403	20	19
100-526-0007	01122	4	24	13218E3558	97403	20	26
112-430-2207	01122	4		13218E3559	97403	20	23
112-454-2007	01122	4	25	13218E3560	97403	20	25
112-454-2055	01122	4	20	13218E3561	97403	20	22
112-454-2070	01122	4		13218E3562	97403	20	9
112-760-2019	01122	4		13218E3563	97403	20	10
	01122	8		13218E3564	97403	20	5
112-760-2020	01122	4	3	13218E3565	97403	20	4
122-760-2020	01122	8	17	13218E3566	97403	20	8
13218E3002	97403	24	16	13218E3567	97403	20	11
13218E3003	97403	24	12	13218E3569	97403	25	7
13218E3005	97403	24	13	13218E3572	97403	20	2
13218E3017	97403	24		13218E3574	97403	25	3
13218E3021	97403	24		13218E3575	97403	20	7
13218E3022	97403	24		13218E3576	97403	20	28
13218E3075	97403	24		13218E3577	97403	20	31
13218E3076	97403	24		13218E3580	97403	25	

INDEX-NATIONAL STOCK NUMBER AND REFERENCE NUMBER  
 CROSS-REFERENCE TO FIGURE AND ITEM NUMBER

<u>REFERENCE No.</u>	<u>MFG CODE</u>	<u>FIG No.</u>	<u>ITEM No.</u>	<u>REFERENCE No.</u>	<u>MFG CODE</u>	<u>FIG No.</u>	<u>ITEM No.</u>
13218E3581	97403	25	8				
13218E3582	97403	25	10				
13218E3585	97403	25	5				
13218E3589	97403	20	1				
13218E3900	97403	26					
13218E4605	97403	24					
13218E7292	97403	24					
13218E7299	97403	24					
13218E7300	97403	24					
13218E7301	97403	24					
917-351-0220	01122	4	1				
	01122	8	15				
930-115-4000	01122	4	5				
	01122	8	19				
938-680-2010	01122	4	23				
944-134-5000	01122	4	2				
	01122	8	16				

By Order of the Secretary of the Army:

*FRED C. WEYAND*  
*General, United States Army*  
*Chief of staff*

Official:

*PAUL T. SMITH*  
*Major General, United States Army*  
*The Adjutant General*

Distribution:

To be distributed in accordance with DA Form 12-25A, (qty rqr block no. 174) Organizational maintenance requirements for Surveying Equipment.



# SOMETHING WRONG WITH THIS MANUAL?



THEN... JOT DOWN THE DOPE ABOUT IT ON THIS FORM, TEAR IT OUT, FOLD IT AND DROP IT IN THE MAIL!

FROM: (YOUR UNIT'S COMPLETE ADDRESS)  
 PFC JOHN DOE  
 CoA, 3<sup>rd</sup> ENGINEER BN  
 FT. LEONARD WOOD MO 63108  
 DATE 16 DEC 74

PUBLICATION NUMBER: TM5-6115-200-20 AND P  
 DATE: 1 APR 72  
 TITLE: GENERATOR SET 10 KW  
 NSN 6115-00-231-7286

BE EXACT... PIN-POINT WHERE IT IS				IN THIS SPACE TELL WHAT IS WRONG AND WHAT SHOULD BE DONE ABOUT IT:
PAGE NO.	PARA-GRAPH	FIGURE NO.	TABLE NO.	
6	2-1 a			In line 6 of paragraph 2-1a the manual states the engine has <u>6</u> cylinders. The engine on my set only has <u>4</u> cylinders. Change the manual to show <u>4</u> cylinders
81		4-3		Callout <u>16</u> on figure 4-3 is pointing at a <u>bolt</u> . In the key to fig. 4-3, item 16 is called a <u>shim</u> . Please correct one or the other.
125	line 20			I ordered a gasket, item 19 on figure B-16 by NSN 2910-00-762-3001. I got a gasket but it doesn't fit. Supply says I got what I ordered so the NSN is wrong. Please give me a good NSN

TYPED NAME, GRADE OR TITLE, AND TELEPHONE NUMBER: JOHN DOE, PFC (268) 317-7111  
 SIGN HERE: John Doe

TEAR ALONG DOTTED LINE

FILL IN YOUR  
UNIT'S ADDRESS

FOLD BACK

DEPARTMENT OF THE ARMY

POSTAGE AND FEES PAID  
DEPARTMENT OF THE ARMY

DOD-314

OFFICIAL BUSINESS

PENALTY FOR PRIVATE USE, \$300

Commander  
U.S. Army Troop Support Command  
ATTN: AMSTS-MPP  
4300 Goodfellow Boulevard  
St. Louis, Missouri 63120

FOLD BACK

ALONG DOTTED LINE

# SOMETHING WRONG WITH THIS MANUAL?



THEN... JOT DOWN THE DOPE ABOUT IT ON THIS FORM, TEAR IT OUT, FOLD IT AND DROP IT IN THE MAIL!

FROM: (YOUR UNIT'S COMPLETE ADDRESS)

DATE

PUBLICATION NUMBER

DATE

TITLE

BE EXACT... PIN-POINT WHERE IT IS

IN THIS SPACE TELL WHAT IS WRONG AND WHAT SHOULD BE DONE ABOUT IT:

PAGE NO.

PARA-GRAPH

FIGURE NO.

TABLE NO.

TEAR ALONG DOTTED LINE

TYPED NAME, GRADE OR TITLE, AND TELEPHONE NUMBER

SIGN HERE:

FILL IN YOUR  
UNIT'S ADDRESS

FOLD BACK

DEPARTMENT OF THE ARMY

POSTAGE AND FEES PAID  
DEPARTMENT OF THE ARMY  
DOD-314

OFFICIAL BUSINESS

PENALTY FOR PRIVATE USE, \$300

Commander  
U.S. Army Troop Support Command  
ATTN: AMSTS-MPP  
4300 Goodfellow Boulevard  
St. Louis, Missouri 63120

TEAR ALONG DOTTED LINE

FOLD BACK

# SOMETHING WRONG WITH THIS MANUAL?



THEN... JOT DOWN THE DOPE ABOUT IT ON THIS FORM, TEAR IT OUT, FOLD IT AND DROP IT IN THE MAIL!

FROM: (YOUR UNIT'S COMPLETE ADDRESS)

DATE

PUBLICATION NUMBER

DATE

TITLE

BE EXACT... PIN-POINT WHERE IT IS

IN THIS SPACE TELL WHAT IS WRONG AND WHAT SHOULD BE DONE ABOUT IT:

PAGE NO.

PARA-GRAPH

FIGURE NO.

TABLE NO.

TEAR DOTTED LINE

TYPED NAME, GRADE OR TITLE, AND TELEPHONE NUMBER

SIGN HERE:

FILL IN YOUR  
UNIT'S ADDRESS

FOLD BACK

DEPARTMENT OF THE ARMY

POSTAGE AND FEES PAID  
DEPARTMENT OF THE ARMY

DOD-314

OFFICIAL BUSINESS

PENALTY FOR PRIVATE USE, \$300

Commander  
U.S. Army Troop Support Command  
ATTN: AMSTS-MPP  
4300 Goodfellow Boulevard  
St. Louis, Missouri 63120

ALONG DOTTED LINE

FOLD BACK



THEN... JOT DOWN THE DOPE ABOUT IT ON THIS FORM, TEAR IT OUT, FOLD IT AND DROP IT IN THE MAIL!

# SOMETHING WRONG WITH THIS MANUAL?

FROM: (YOUR UNIT'S COMPLETE ADDRESS)

DATE

PUBLICATION NUMBER

DATE

TITLE

BE EXACT... PIN-POINT WHERE IT IS

IN THIS SPACE TELL WHAT IS WRONG AND WHAT SHOULD BE DONE ABOUT IT:

PAGE NO.

PARA-GRAPH

FIGURE NO.

TABLE NO.

TEAR ALONG DOTTED LINE

TYPED NAME, GRADE OR TITLE, AND TELEPHONE NUMBER

SIGN HERE:

FILL IN YOUR  
UNIT'S ADDRESS

FOLD BACK

DEPARTMENT OF THE ARMY

POSTAGE AND FEES PAID  
DEPARTMENT OF THE ARMY

DOD-314

OFFICIAL BUSINESS

PENALTY FOR PRIVATE USE, \$300

Commander  
U.S. Army Troop Support Command  
ATTN: AMSTS-MPP  
4300 Goodfellow Boulevard  
St. Louis, Missouri 63120

FOLD BACK



# THE METRIC SYSTEM AND EQUIVALENTS

## Linear Measure

1 centimeter = 10 millimeters = .39 inch  
 1 decimeter = 10 centimeters = 3.94 inches  
 1 meter = 10 decimeters = 39.37 inches  
 1 dekameter = 10 meters = 32.8 feet  
 1 hectometer = 10 dekameters = 328.08 feet  
 1 kilometer = 10 hectometers = 3,280.8 feet

## Weights

1 centigram = 10 milligrams = .15 grain  
 1 decigram = 10 centigrams = 1.54 grains  
 1 gram = 10 decigrams = .035 ounce  
 1 dekagram = 10 grams = .35 ounce  
 1 hectogram = 10 dekagrams = 3.52 ounces  
 1 kilogram = 10 hectograms = 2.2 pounds  
 1 quintal = 100 kilograms = 220.46 pounds  
 1 metric ton = 10 quintals = 1.1 short tons

## Liquid Measure

1 centiliter = 10 milliliters = .34 fl. ounce  
 1 deciliter = 10 centiliters = 3.38 fl. ounces  
 1 liter = 10 deciliters = 33.82 fl. ounces  
 1 dekaliter = 10 liters = 2.64 gallons  
 1 hectoliter = 10 dekaliters = 26.42 gallons  
 1 kiloliter = 10 hectoliters = 264.18 gallons

## Square Measure

1 sq. centimeter = 100 sq. millimeters = .155 sq. inch  
 1 sq. decimeter = 100 sq. centimeters = 15.5 sq. inches  
 1 sq. meter (centare) = 100 sq. decimeters = 10.76 sq. feet  
 1 sq. dekameter (are) = 100 sq. meters = 1,076.4 sq. feet  
 1 sq. hectometer (hectare) = 100 sq. dekameters = 2.47 acres  
 1 sq. kilometer = 100 sq. hectometers = .386 sq. mile

## Cubic Measure

1 cu centimeter = 1000 cu. millimeters = .06 cu. inch  
 1 cu. decimeter = 1000 cu. centimeters = 61.02 cu. inches  
 1 cu. meter = 1000 cu. decimeters = 35.31 cu. feet

# APPROXIMATE CONVERSION FACTORS

<i>To change</i>	<i>To</i>	<i>Multiply by</i>	<i>To change</i>	<i>To</i>	<i>Multiply by</i>
inches	centimeters	2.540	centimeters	inches	.394
feet	meters	.305	meters	feet	3.280
yards	meters	.914	meters	yards	1.094
miles	kilometers	1.609	kilometers	miles	.621
square inches	square centimeters	6.451	square centimeters	square inches	.155
square feet	square meters	.093	square meters	square feet	10.764
square yards	square meters	.836	square meters	square yards	1.196
square miles	square kilometers	2.590	square kilometers	square miles	.386
acres	square hectometers	.405	square hectometers	acres	2.471
cubic feet	cubic meters	.028	cubic meters	cubic feet	35.315
cubic yards	cubic meters	.765	cubic meters	cubic yards	1.308
fluid ounces	milliliters	29.573	milliliters	fluid ounces	.034
pints	liters	.473	liters	pints	2.113
quarts	liters	.946	liters	quarts	1.057
gallons	liters	3.785	liters	gallons	.264
ounces	grams	28.349	grams	ounces	.035
pounds	kilograms	.454	kilograms	pounds	2.205
short tons	metric tons	.907	metric tons	short tons	1.102

